

CONCRETE ARTS

CONCRETE CREATIONS By BOMANITE CONTRACTORS

○ IMPRESSIONS | ○ April | ○ 2011

Bomanite Exposed Aggregate Systems bring the vintage decorative concrete option back into the forefront of the industry with innovative systems, longer-lasting products, and a variety of mix designs that combine the durability you need with the beauty you desire. With a variety of modernized mixes and an unlimited palette of colors, textures and aggregate options to choose from, Bomanite Exposed Aggregate Systems offer cost-effective solutions that are more durable than ever and reveal just how brilliant concrete can be.

PROJECT PROFILE

Kansas City Zoo

Bomanite Exposed Aggregate Systems: Kansas City Zoo



Bomanite Exposed Aggregate Systems revive a long-standing decorative paving style with innovative systems, products and techniques that are changing the look, life and future of exposed aggregate hardscapes. Advanced mix designs, combined with color and unlimited aggregate options, create unique textures and durable surfaces that are cost-effective and provide an alternative to other paving options.

For years the front entrance to the Kansas City Zoo was an unwelcoming and inconvenient meandering trail that forced visitors to drag their strollers, children and other paraphernalia across a long and unsightly path to the ticket office. All that has changed. In the spring of 2008, Bomanite Licensee, Musselman & Hall took on the project to help beautify the Zoo entrance.

M&H's portion of the work included the placement of nearly 22,000 s.f. of SandScape Texture by Bomanite sidewalk, 2,900 s.f. of exposed aggregate sidewalk, and 4,500 s.f. of integrally colored pavement at the entrance. All of the work had to be completed in six weeks in order to meet the schedule for the grand opening. Although the M&H crew were pressed for time, working 7 days a week, they managed to add an extra special touch by creating an otter foot stamp outside the Otter Exhibit to make it look like the otters had tracked through the fresh concrete. The integrally colored pavement included Bomanite Light Copper and Granola colors. The SandScape Texture sidewalks contained alternating bands of the same Light Copper and Granola shades.

In addition to the Zoo Entrance, Musselman & Hall also completed work on the Polar Bear Exhibit. The installed surrounding walkways and entrance to the Polar Bear Exhibit use the Revealed Bomanite Exposed Aggregate System.

SandScape Texture by Bomanite is designed for outdoor applications where an alternative to a conventional concrete finish is required. Utilizing advanced application procedures and specialized mix designs, SandScape Texture is a green, consistent alternative to sand blasted concrete. SandScape Texture can incorporate specialized light fast colored sands and/or natural graded aggregates in the concrete mix to achieve a broader palette of color.

Revealed by Bomanite is a sustainable concrete system that incorporates unique aggregates and color blending processes with the traditional technology of exposing aggregates to create highly decorative hardscape installations. Revealed by Bomanite is placed over freshly poured concrete with the surface exposed to reveal the aggregates within.

These highly durable surfaces are available in a multitude of standard and custom options, including light-reflective formulations that reduce heat island effect, providing for a sustainable option to choose from for your paving needs. The Bomanite Exposed Aggregate Systems are applied by specially trained and licensed Bomanite Contractors, ensuring consistent quality in every application. Every Bomanite Licensed Contractor is part of a network of architectural concrete experts – professionals who receive ongoing technical training to ensure that your project is completed on time, on budget, and beyond your expectations. To find your local certified expert near you, visit www.bomanite.com/exposed

PROJECT STATISTICS

Project Name:
Kansas City Zoo

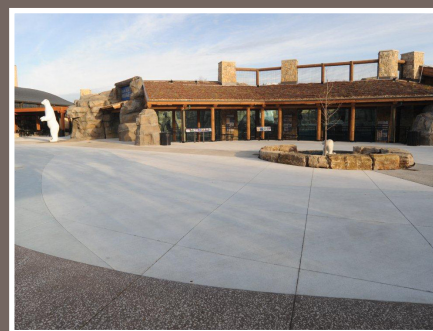
Project Designer:
P.G.A.V. Architects

Nature of Business:
Distinctive paving for exterior walkways

Location:
Kansas City, MO

Completed: Spring 2008
Sq. Ft: 29,400

Bomanite System:
Exposed Aggregate Systems
-SandScape Texture by Bomanite
-Revealed by Bomanite
-Bomanite Integral Color -
Granola and Light Copper



CONCRETE ARTS

Bomanite Franchise Company
575 Schommer Drive
Hudson, WI 54019
651.436.2525
www.ConcreteArts.com

Bomanite

The Bomanite Company
8789 Auburn Folsom Rd. #108
Granite Bay, CA 95746
(303) 369-1115
www.bomanite.com

EXPLORING CONCRETE CREATIONS

Systems by Bomanite

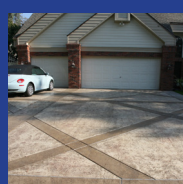
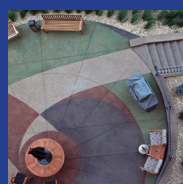
Exposed Aggregate

Concrete Polishing

Stamped Concrete

Topping Systems

Grasscrete



Bomanite Project Award Winners Announced! Each year Bomanite recognizes outstanding craftsmanship of our Bomanite Licensed Contractors. To view additional photos of the Award Winning Projects, [click here](#).

Best Imprint
Residential Project
Gold Award



"Barwick Residence"
Heritage Bomanite
Fresno, CA

Best Imprint
Commercial Project
Gold Award



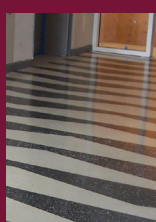
"East 54"
Carolina Bomanite Corp.
Charlotte, NC

Best Exposed
Aggregate Project
Gold Award



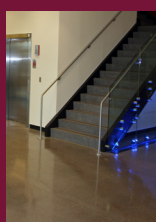
"Private Residence"
Colorado Hardscapes
Denver, CO

Best
Custom Polishing Project
Gold Award



"Commercial Entryway"
Beyond Concrete
Keyport, NJ

Best
Custom Polishing Project
Silver Award



"MSU - Law Enforcement"
Concrete Arts
Hudson, WI

Best
Toppings Project -Thin-Set
Gold Award



"Portola Plaza Hotel"
Heritage Bomanite
Fresno, CA